

A step-by-step guide to constructing a Sir Lancelot Suit of Armour (AH6000) for display purposes. The suit of armour comes in two boxes containing a wooden stand, poles and semi-constructed pieces of armour.

Step 1

Unbox the wooden stand and place it in the desired position, where it will stand complete. Make sure the two holes on the stand are facing the back.



Step 2

Slot the two leg poles into the holes on the stand. Make sure the extra fittings on the poles are facing the back.

Step 3

Place the first leg onto the pole making sure this part of the leg is facing outwards. This is how you tell the left and the right leg. Fasten and tighten the leather straps at the back until they are secure around the pole.

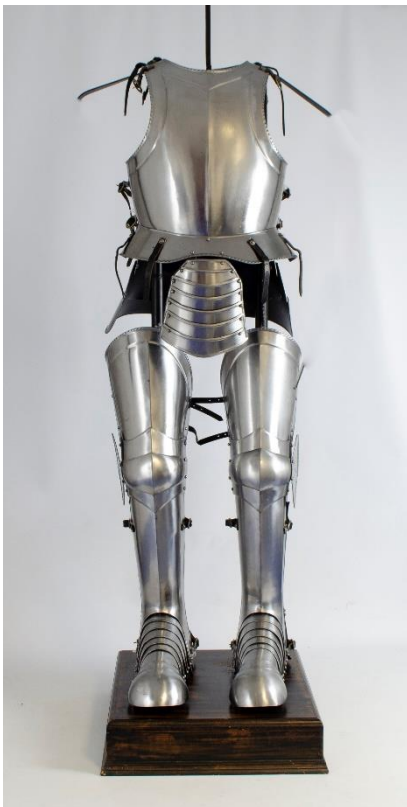


Step 4

Repeat step 3 for the second leg, adjusting them accordingly until you are happy with the position.

Step 5

Slot the body pole into the leg poles. You can bend the arms to suit a certain position.

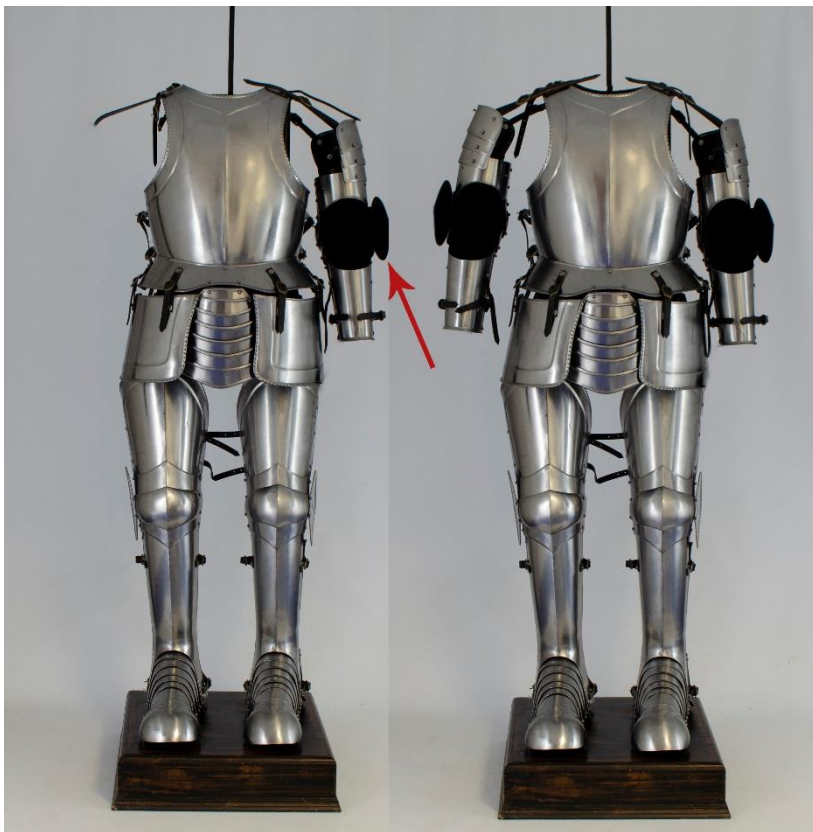
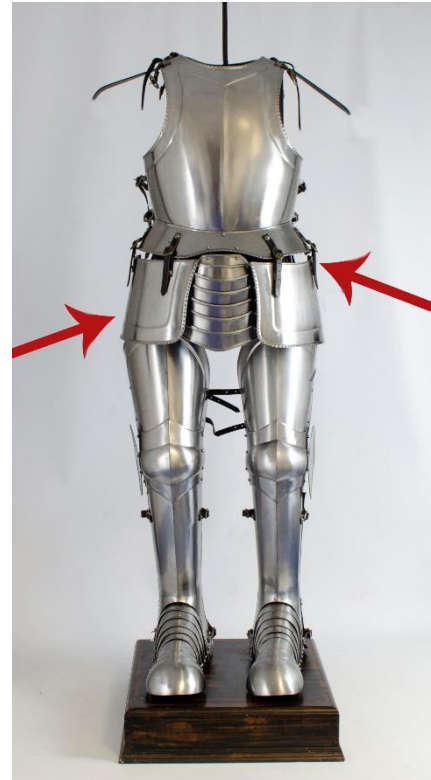


Step 6

Attach the breast plate and the back plate by fastening the leather straps on the shoulders. Make sure the back piece is inside the breast plate both on the shoulders and on the sides. Fasten the straps on the sides.

Step 7

Use the leather straps attached to the bottom of the breast plate to secure the two Tassets.

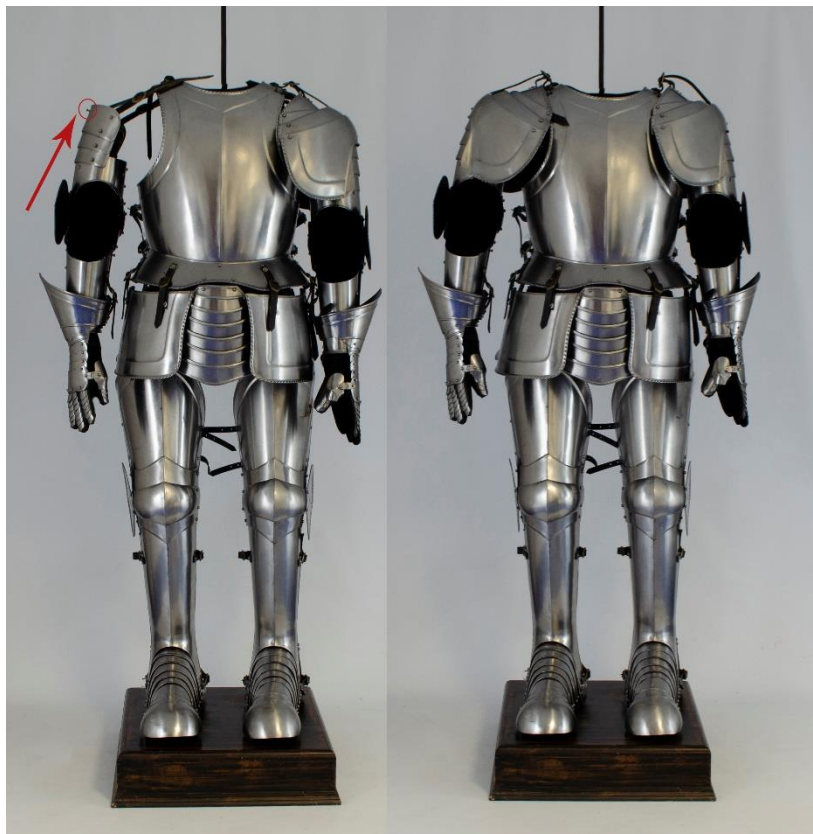
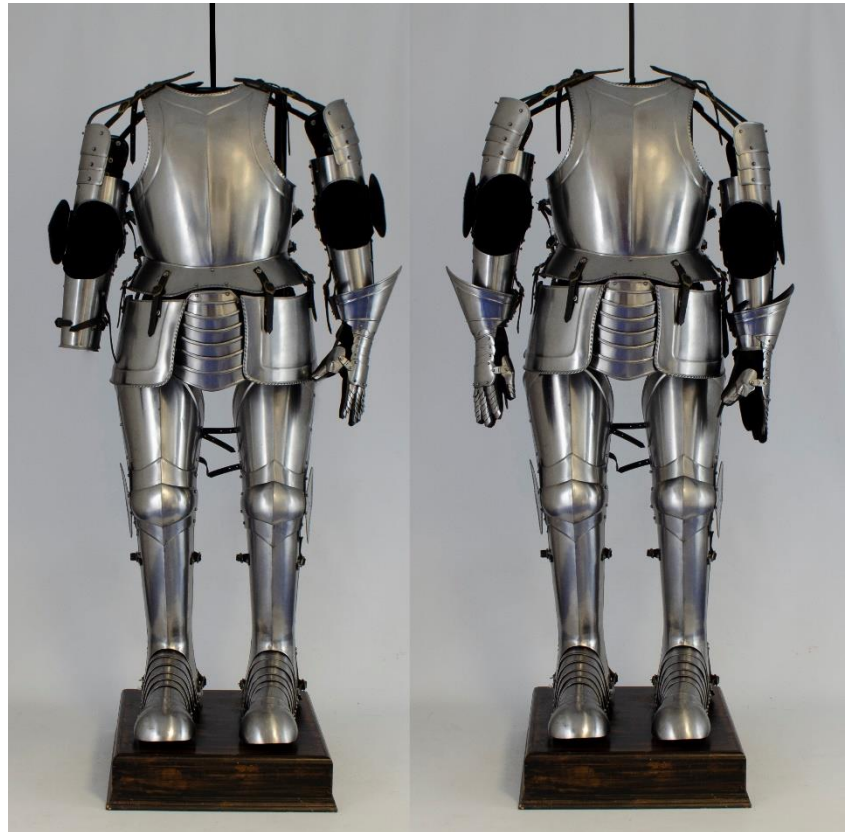


Step 8

Slide the arms onto the poles one at a time, fastening them at the top on the shoulders. Again, you need the part indicated to be facing outwards as pictured.

Step 9

Attached the gauntlets (hands) one at a time using the straps on the bottom of the arms. Make sure the leather glove inside the gauntlets goes into the suit of armour arm. Do not slide the pole into the leather glove but instead into the gauntlet to wrap the thumb around the pole end.



Step 10

Attach the pauldrons (shoulders) as shown on the image by using the leather straps at the top. You will see a small hole on each shoulder piece. Make sure this hole is hooked onto the notch circled in the image.

Step 11

Finally, rest the helmet onto the top of the stand until it is stable. Your suit of armour is now complete.

